

**OFFICER DELEGATION SCHEME
RECORD OF OPERATIONAL DECISION**



TO BE UPLOADED TO THE E-MEETINGS MANAGER

Date: 17.10.19	Ref No: 1960
Type of Operational Decision:	
Executive Decision <input checked="" type="checkbox"/>	Council Decision <input type="checkbox"/>
Status: For publication	
Title/Subject matter: Rawsons Rake, Ramsbottom – Proposed traffic regulation order for the operation and use of snow gates	
Budget/Strategy/Policy/Compliance – Is the decision:	
(i) within an Approved Budget	✓
(ii) not in conflict with Council Policy	✓
(iii) not raising new issues of Policy	✓
Equality Analysis [Does this decision change or make policy; change or make procedure or working practice? An Equality Analysis must be completed to assess the impact on equality and the relevance of the Public Sector Equality Duty. This should be signed off by your departmental equality representative and accompany this decision form. Please forward a copy to the Equality email for publication].	No
	Signed: (By EA Officer) Date:
Details of Operational Decision Taken [with reasons]:	
Further to the recommendation of the Traffic Management Unit (minute number 4120) to approve for advertising the proposal for the introduction of snow gates and associated traffic regulation order. The restriction is proposed in the interests of public safety to avoid danger to persons or other traffic using the road in adverse weather conditions and will be implemented by fixed lockable gates.	
Decision taken by:	Signature:
D R Giblin Head of Engineering	
	18/10/19
Members Consulted [see note 1 below]	
Cabinet Member/Chair	
Lead Member	

Opposition Spokesperson		
-------------------------	--	--

Notes

1. It is not generally a requirement to consult with any Members on Operational Decisions but where an Executive Director considers it necessary to consult with the appropriate Cabinet Member and/or Lead Member, they must sign the form so as to confirm that they have been consulted and that they agree with the proposed action. The signature of the Opposition Spokesperson should be obtained to confirm that he/she has been consulted.
2. **This form must not be used for urgent decisions.**

January 2015

STATEMENT OF COUNCIL'S JUSTIFICATION

TM2/19/461:- Rawsons Rake, Ramsbottom

Rawsons Rake in Ramsbottom connects Tanners Street/Dundee Lane with Lumb Carr Road/Helmshore Road, has a gradient of 1 in 4, does not benefit from footways on either side of the road and in places is only wide enough for one lane of traffic.

Rawsons Rake is well utilized by residents, traffic travelling to/from Ramsbottom town centre and by some parents accessing Emmanuel Holcombe Primary School which is located on Helmshore Road close to the junction of Chapel Lane.

Given the gradient of the road, this can present difficulties for vehicles negotiating Rawsons Rake in adverse weather conditions. Whilst the majority of residents will likely chose not to attempt to utilise Rawsons Rake by vehicle in adverse weather conditions, there are some drivers who insist on doing so. In the past this has led to vehicles colliding with property walls adjacent to the road and on occasion other vehicles.

In recent years in an effort to combat the difficulties adverse weather presents at this particular location, the Council has placed additional warning signs, both at the top and bottom end of the road, to highlight to drivers that the road is impassable by vehicles in ice or snow. Additionally, when conditions have been significantly worse, the Council has implemented a system of closing the road utilising emergency road closure powers with the associated placement of temporary free standing road closure signs and cones.

Closures have been implemented in an effort to protect drivers and in the interests of the safety of any pedestrians who may be using Rawsons Rake.

Whilst these measures have been taken, there has been a continuing problem of a number of drivers persistently ignoring warning signs and the temporary road closure signs have been removed so drivers can continue to use Rawsons Rake by vehicle.

Given the ongoing problems and safety concerns that this presents, the Council is looking to implement a more formal system of closure in adverse weather conditions that can be implemented by the use of a fixed snow gate system and supporting warning signs.

Traffic Management Unit discussed issues on Rawsons Rake at their meeting of 31 May 2018. The measures are proposed in the interests of public safety to avoid danger to persons or other traffic using the road.

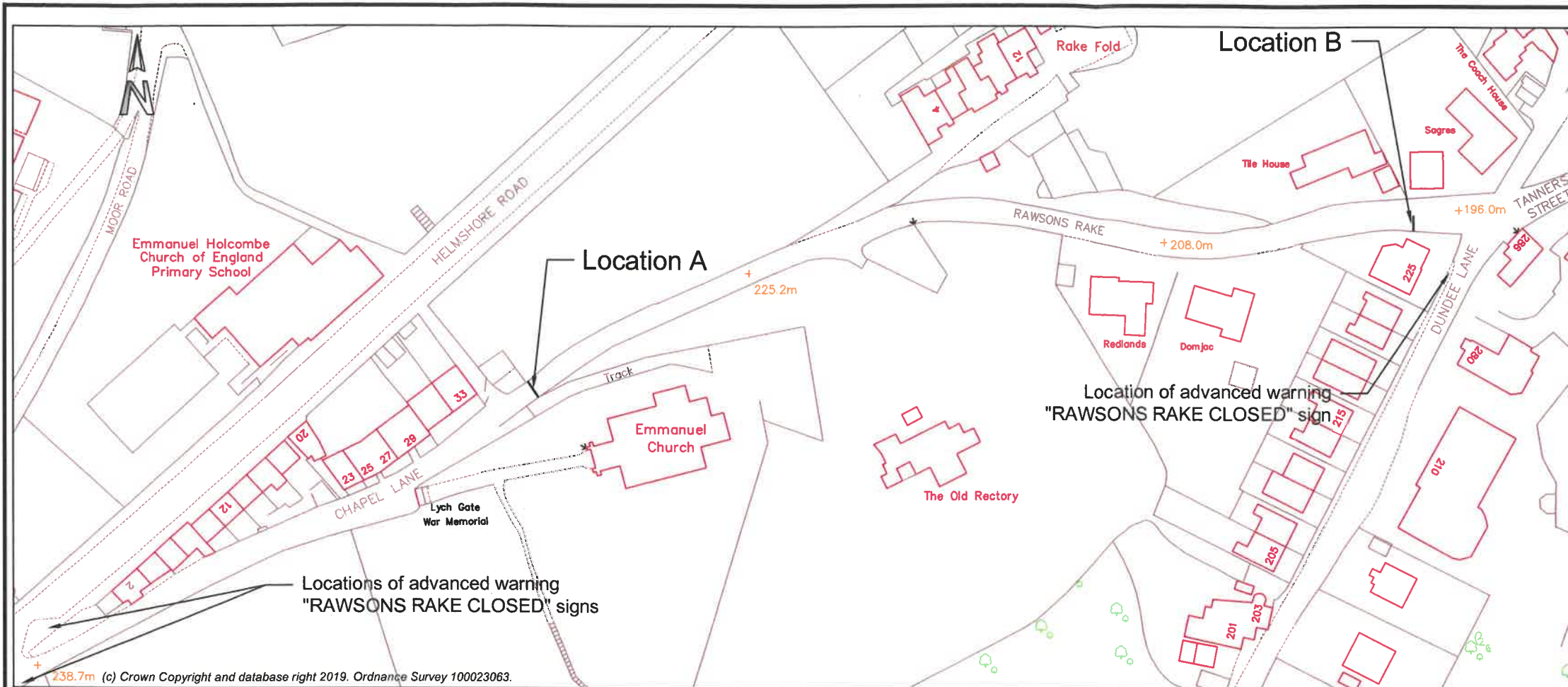
The extent of the proposed restrictions are described in the accompanying schedule.

SCHEDULE

Introduction of Restriction to Prevent use by vehicles in Adverse Weather

Rawsons Rake, Ramsbottom – Full length.

Fixed snow gates to be positioned at the junction of Chapel Ln/Rawsons Rake and Dundee Ln/Rawsons Rake.



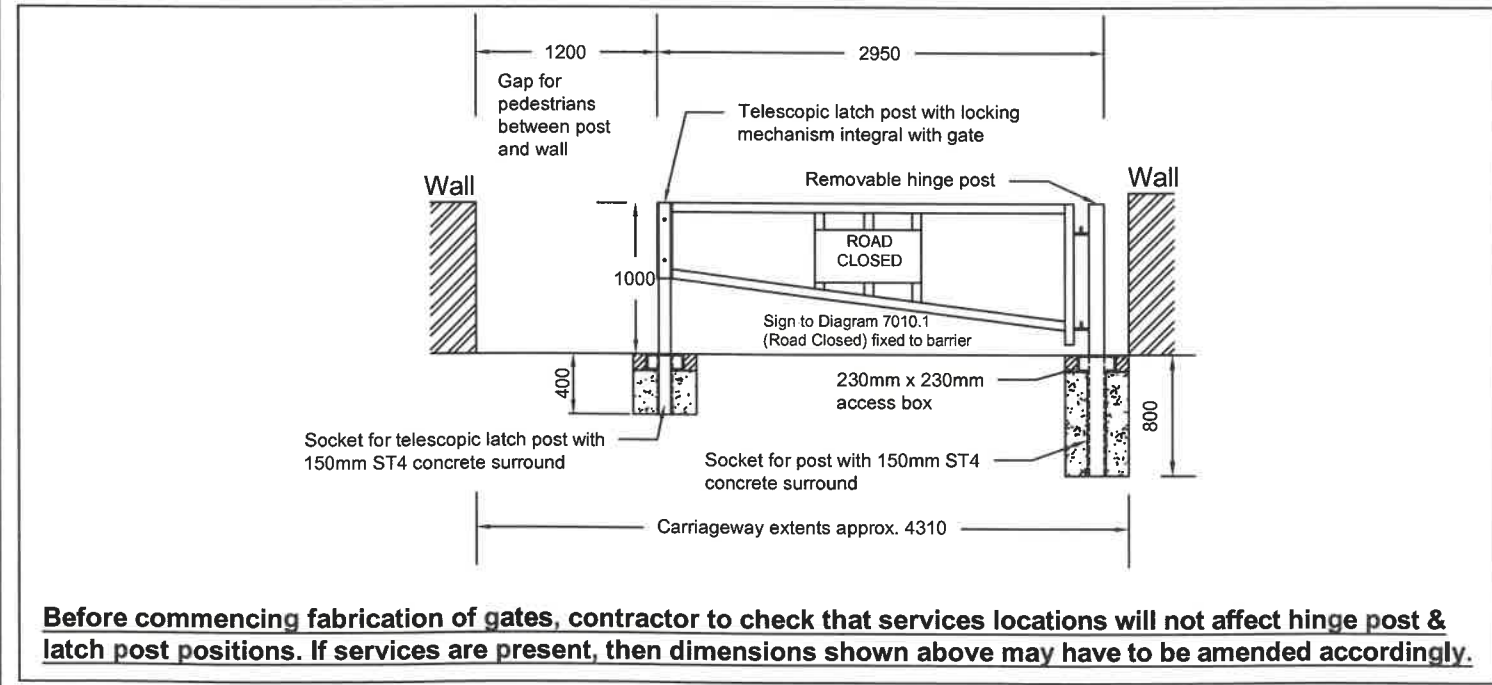
Notes:

1. Dimensions shall not be scaled from the drawing.
2. All dimensions are in millimetres unless otherwise stated.
3. Barrier manufactured from 60 x 60 x 3mm galvanised steel SHS (5.3kg/m).
4. Posts manufactured from 100 x 100 x 4mm galvanised steel SHS (11.9kg/m).
5. Posts and gates to be painted to RAL 1023 (Traffic Yellow).
6. Additional sockets for latching posts for barriers in "open" position also to be installed.
7. Exact location of barriers/post to be determined after trial holes to check for services.
8. A temporary road closure will be arranged to enable the contractor to undertake the works. The details of the temporary road closure and temporary diversion route are shown on Dwg HS564/101. Signing of the temp road closure and diversion route will be the responsibility of the contractor.

Approx. weights

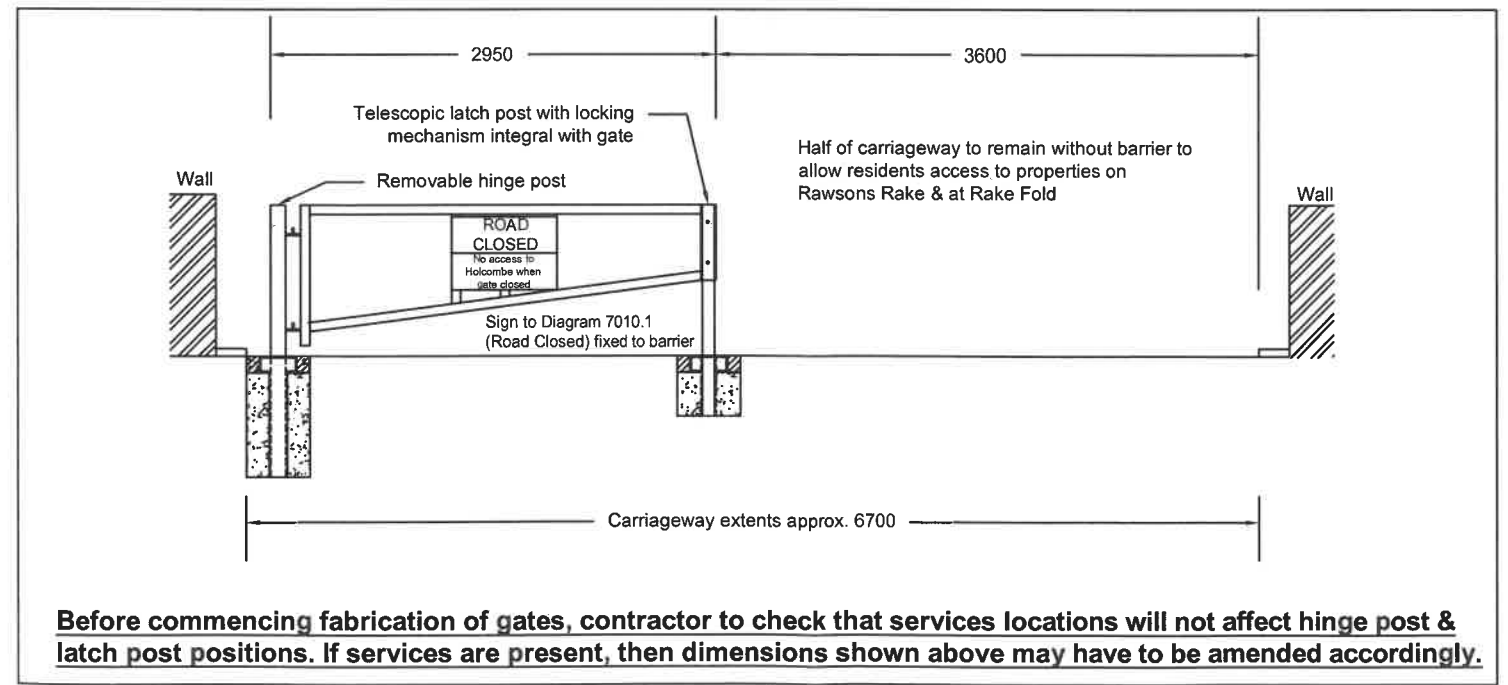
Gate including telescopic latch post 50kg
Hinge post 20kg

Location Plan - 1:1250



Before commencing fabrication of gates, contractor to check that services locations will not affect hinge post & latch post positions. If services are present, then dimensions shown above may have to be amended accordingly.

Proposed Arrangement at Location A (looking NE down Rawsons Rake) - Scale 1:50



Before commencing fabrication of gates, contractor to check that services locations will not affect hinge post & latch post positions. If services are present, then dimensions shown above may have to be amended accordingly.

Proposed Arrangement at Location B (looking W up Rawsons Rake) - Scale 1:50

PHOTOGRAPHIC COPY LIABLE TO DISTORTION IN SCALE

Rev A 15/10/19 Sign detail added to gate & advanced warning sign locations added

Department for Operations

Engineering Consultancy Services
3 Knowsley Place, Duke St, Bury BL9 0EJ
Tel: 0161-253-5000 Fax: 0161-253-5794
E-mail: engcon@bury.gov.uk
Internet: www.bury.gov.uk



Project Title		Rawsons Rake, Holcombe - Proposed Snow Gates	
Scale	As shown	Date	July 2019
Drawn by	AJA	Checked by	
Drawing No.	HS564/100	Revision	A